

IPS162 - Installation Instructions for SRT Rear Tow Hook Kit for 2003 to 2017 Vipers

WARNING

Modification of your vehicle with the parts identified above may alter its stock performance; the buyer hereby expressly assumes all risks associated with any such modification.

DISCLAIMER OF WARRANTY

Seller disclaims any warranty express or implied with respect to the parts sold hereby whether as to merchantability, fitness for particular purpose, or any other matter. IPSCO assumes no liability expressed or implied for the improper installation or use of this product or its components. IPSCO is NOT responsible for any damage, consequential or otherwise for equipment failure after installation



This kit allows a tie down point or tow ring on the rear by bolting a tow ring to the left or right rear frame member. These instructions show installation for the right side. Left side installation is a mirror image of the right.

1. Using a T40 Torx Bit, remove the first 8mm screw that holds the belly pan to the frame in the right rear corner. Now remove the Phillips head screws just to the rear of the Torx screw just taken out. See photo #1 below for location of these two screws. *Note: on GEN 5 cars the Phillips head has been changed to a T30 Torx Screw.*



Photo # 1

2. Place the new tow hook up to where you just removed the screws and align the two slots in the tow hook plate with the two screw holes. Install the 8mm Torx screw in the hole towards the front of the car. Leave loose so the bracket can be moved around a little. Now put one ½” washer on the Grade 8 ½-13 bolt, and put bolt through the new bracket and the slot in the car frame. Install second ½” washer and Nylock nut onto the ½” bolt as shown in photo #2 below.

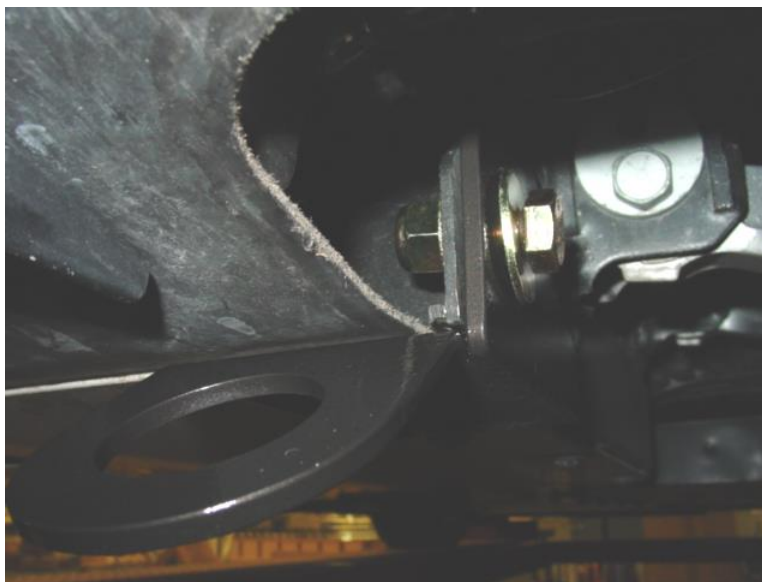


Photo # 2

3. Now tighten the ½-13 bolt and nut first and then the 8mm Torx screw second. Install the Phillips head screw in the rear slot. The completed assembly should look like Photo # 4a & 4b.

Note: on GEN 5 cars the Phillips head has been changed to a T30 Torx Screw.



Photo #4a



Photo # 4b

4. You are done. If you have any questions or need assistance give us a call at 303-252-4481 and thank you for purchasing this IPSCO product.